

DISADVANTAGED COMMUNITY OUTREACH in the Merced Sub-basin



Leadership Counsel for Justice and Accountability
Self-Help Enterprises



**Self-Help
Enterprises**



Technical Assistance for Severely Disadvantaged Communities

▶ Self-Help Enterprises

- ▶ Outreach and Education
- ▶ Direct Community Assistance (e.g. coordination, facilitation and translation services)
- ▶ GSP Development Assistance (including Planning and Project Development and Procurement of Professional Services)

Maria Herrera (559) 802-1676, MariaH@selfhelpenterprises.org



▶ Leadership Counsel for Justice and Accountability

- ▶ Outreach and Education
- ▶ GSP Development Assistance
- ▶ Identification of Community Water Projects
- ▶ Procurement of Professional Services (analysis)

Amanda Monaco (559) 369-2788 ext. 1003,
amonaco@leadershipcounsel.org



LEADERSHIP COUNSEL FOR JUSTICE AND ACCOUNTABILITY

- ▶ **Who We Are:** We are an environmental justice and social justice nonprofit based in the Central Valley and East Coachella Valley. We work alongside 27 low income communities of color to advocate for equitable local and state policies and programs, so that their communities can benefit from the basic infrastructure necessary for healthy and safe communities.
- ▶ **Our funding for SGMA work:** DWR Prop 1 grant, Water Foundation

Leadership Counsel's community partners

- ▶ Mostly unincorporated communities, some low income communities in cities
- ▶ Often lack basic infrastructure:
 - ▶ Lack safe sidewalks for children to walk to school
 - ▶ Lack safe roads, and effective public transportation
 - ▶ Lack healthy green spaces
 - ▶ Lack affordable housing options
 - ▶ Suffer from disproportionate environmental harm
 - ▶ Lack clean drinking water, or suffer from dry wells



Leadership Counsel DAC outreach in the Merced Sub-basin

- ▶ Presentation to community group in Delhi
 - ▶ Identified location of homes on wells, and existing problems with dry wells
 - ▶ Community wants to participate in GSA activities to advocate for drinking water resources in and around their community

- ▶ Presentation to Neighbors United for a Better South Merced
 - ▶ Identified areas in South Merced that are on domestic wells
 - ▶ Community wants to participate in GSA board meetings and committees

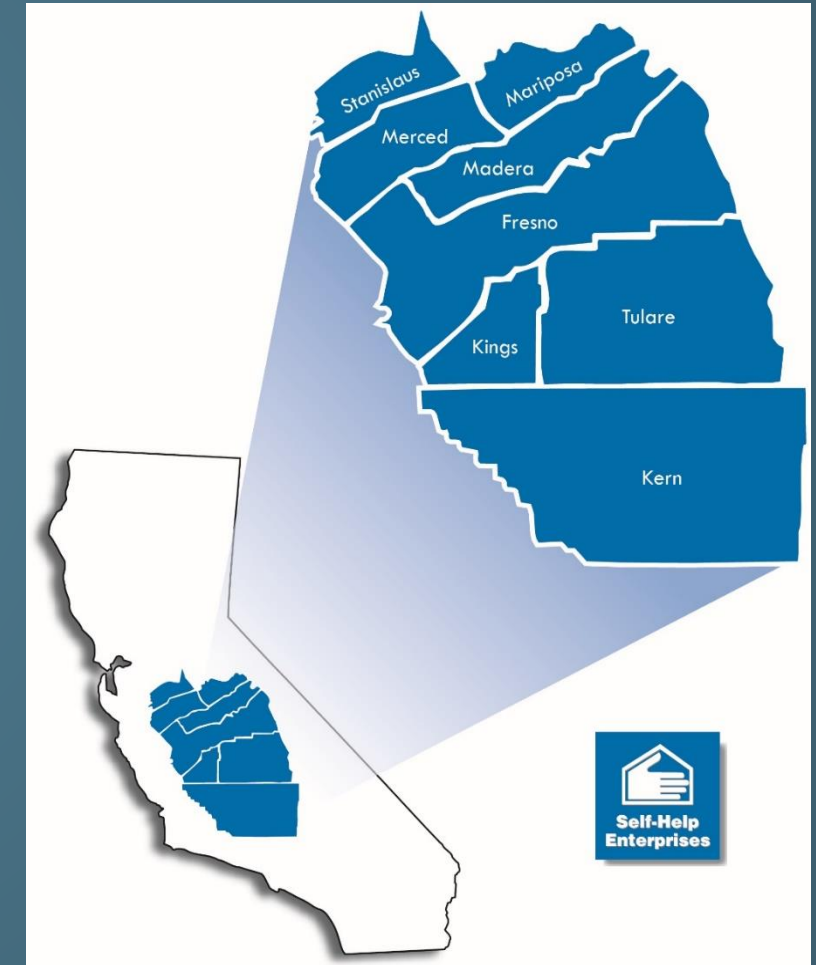
- ▶ Upcoming presentation with community group in Planada

Other DAC Engagement

- ▶ April 21, 2018 GSP Workshop (joint effort with SHE and Union of Concerned Scientists)
- ▶ Also, provided recommendations to staff on the methodology for setting Minimum Thresholds and impacts on DACs.

Self-Help Enterprises (SHE)

- SHE is a nationally-recognized non-profit housing and community development organization whose mission is to work together with low-income families to build and sustain healthy homes and communities.
- Community Development Program provides technical assistance and leadership development in rural communities who face clean water, sanitary sewer and other infrastructure challenges.
- Community Engagement and Planning Team supports community participation in regional water management and groundwater sustainability planning as well as building water management capacity and expertise in rural communities.



August 2, 2018 SGMA WORKSHOP

- ▶ Supported the development of workshop materials
 - ▶ Agenda and Get to know Your GSA Factsheets
- ▶ Translation of Materials
- ▶ Conducted Community Outreach
 - ▶ The Grove
 - ▶ Bear Creek
 - ▶ Tuttle
 - ▶ El Nido
 - ▶ Le Grand
 - ▶ Planada



Merced Irrigation Urban GSA (MIUGSA)

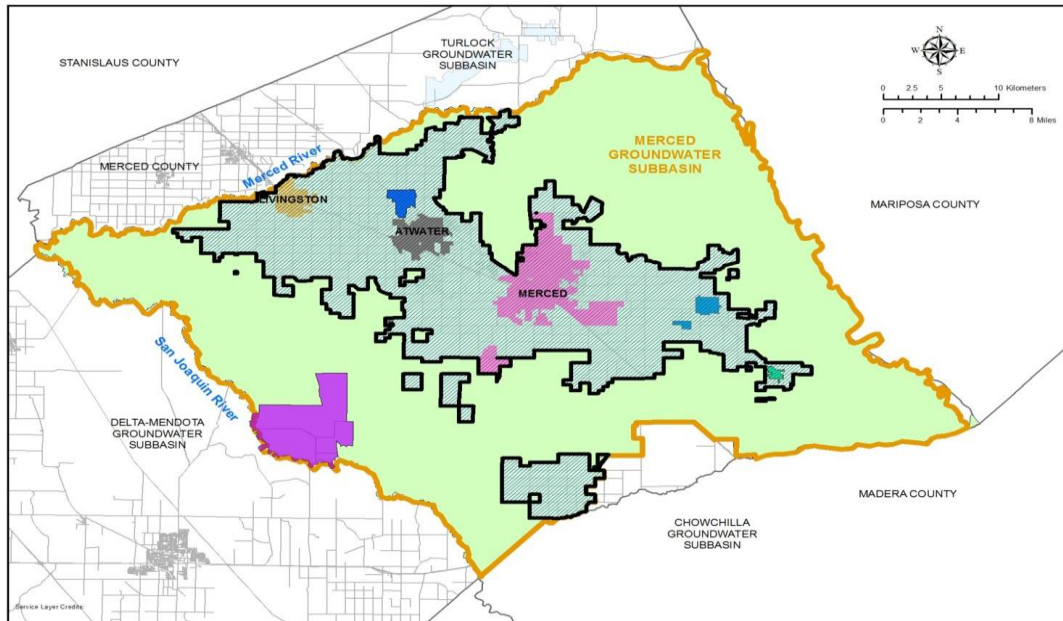


EXHIBIT A
MERCED IRRIGATION - URBAN GSA

GSA NAME	Merced Irrigation-Urban Groundwater Sustainability Agency		
FORMED	April 24, 2017		
AGENCY TYPE	Memorandum of Understanding (A Memorandum of Understanding (MOU) is a nonbinding agreement between two or more parties outlining the terms and details of an understanding, including each parties' requirements and responsibilities.)		
GSA MEMBER AGENCIES	City of Merced, City of Atwater, City of Livingston, Le Grand Community Services District, Planada Community Services District, Winton Water and Sanitary District, and Merced Irrigation District		
GSA BOUNDARIES	Atwater, City of Merced, LeGrand, Livingston, Planada, Winton, The Grove, El Nido, Tuttle, Bear Creek, Cressey, Lingard		
BOARD OF DIRECTORS	Hicham Eltal Stephanie Dietz Ken Elwin Jose Antonio Ramirez	Brenda Wey Carlos Valencia Daniel Chavez Bob Giampoli	Cynthia Benevidez Justin Vinson
GSA MEETINGS	MIUGSA meetings are held on the second Wednesday of the month at 9 AM at the Merced Irrigation District, 744 W. 20th Street, Merced, CA 95340		
COMMITTEES	The Coordinating Committee consists of representatives from each GSA in the Merced subbasin and coordinates GSP planning and public outreach. The Stakeholder Committee consists of community representatives who will review and advise on groundwater conditions, management issues and needs, and projects and management actions to improve sustainability in the basin. Both committees meet the fourth Wednesday of every month at the Castle Conference Center in Atwater. The stakeholder committee meets at 9:30 a.m. and the coordinating committee meets at 1:30 p.m.		

Board Presentation/Community Meetings

▶ Le Grand Board Presentation (August 9, 2018)

▶ Workshop Overview

- ▶ The Sustainable Groundwater Management Act (SGMA)
- ▶ Your Local Groundwater Sustainability Agency and their efforts to comply with SGMA
- ▶ How to Get Involved
- ▶ Available Resources

▶ Community Meetings

▶ October 3, 2019

- ▶ Bear Creek and Tuttle – Cancelled due to Rain

▶ October 8, 2018

- ▶ El Nido - attended by 5 community residents (2 private well owners, 3 served by a PWS)

Upcoming DAC outreach

- ▶ Second week of December: SHE and LCJA helping host the first round of DAC workshops in Planada and Winton



Questions/Comments/Further Discussion?

