
GSP Stakeholder Committee

Stakeholder Committee Meeting – May 29, 2018

Image courtesy: Veronica Adrover/UC Merced



Agenda

- Welcome and Introductions
- Stakeholder outreach approach
- Stakeholder committee role and agreements
- SGMA overview
- Groundwater management activities, scope, and timeline
- Stakeholder Committee decision-making and schedule
- Public comment
- Next steps and adjourn



Image courtesy: Veronica Adrover/UC Merced



Stakeholder Outreach Approach

Image courtesy: Veronica Adrover/UC Merced

Requirements for GSP Outreach

- Identify Stakeholders
 - Encourage involvement of diverse social, cultural, and economic elements of the population within the basin
- Hold Public Meetings
- Provide Opportunities for Public Input
- Document the Public Involvement Process
- Inform the Public about the progress of the GSP

Image courtesy: Veronica Adrover/UC Merced

Merced GSP Outreach Structure

- GSA Leadership – overall authority for decision-making, GSP development and implementation
- Coordinating Committee – Advise on plan development and recommendations to decision-makers
- Stakeholder Committee – Represent diverse stakeholders in basin and provide input to inform plan development
- Public workshops – Building awareness and understanding; emphasis on engagement of DACs



Stakeholder Committee Role

- Multi-disciplinary group comprised of organizations representing interested parties
- Forum for testing ideas and providing information
- Responsible for providing feedback and communicating to their constituencies
- Recommendations considered by Coordinating Committee and GSA Leadership
- Periodic in-person meetings (every one to two months) open to the public
- Committee Approved by GSA Boards, as recommended by Coordinating Committee


Image courtesy: Veronica Adrover/UC Merced

Stakeholder Committee Meeting Agreements

Guidelines for successful meetings

- Civility is required.
 - Treat one another with courtesy and respect for the personal integrity, values, motivations, and intentions of each member.
 - Be honest, fair, and as candid as possible.
 - Personal attacks and stereotyping are not acceptable.
- Creativity is encouraged.
 - Think outside the box and welcome new ideas.
 - Build on the ideas of others to improve results.
 - Disagreements are problems to be solved rather than battles to be won.
- Efficiency is important.
 - Participate fully, without distractions.
 - Respect time constraints and be succinct.
 - Let one person speak at a time.
- Constructiveness is essential.
 - Take responsibility for the group as a whole and ask for what you need.
 - Enter commitments honestly, and keep them.
 - Delay will not be employed as a tactic to avoid an undesired result.

Image courtesy: Veronica Adrover/UC Merced



Sustainable Groundwater Management Act Requirements

Image courtesy: Veronica Adrover/UC Merced

SGMA: Common Language

- SGMA = Sustainable Groundwater Management Act
- GSA = Groundwater Sustainability Agency
- GSP = Groundwater Sustainability Plan (developed and implemented by GSAs)
- Medium Priority, High Priority, and Critically Overdrafted basins

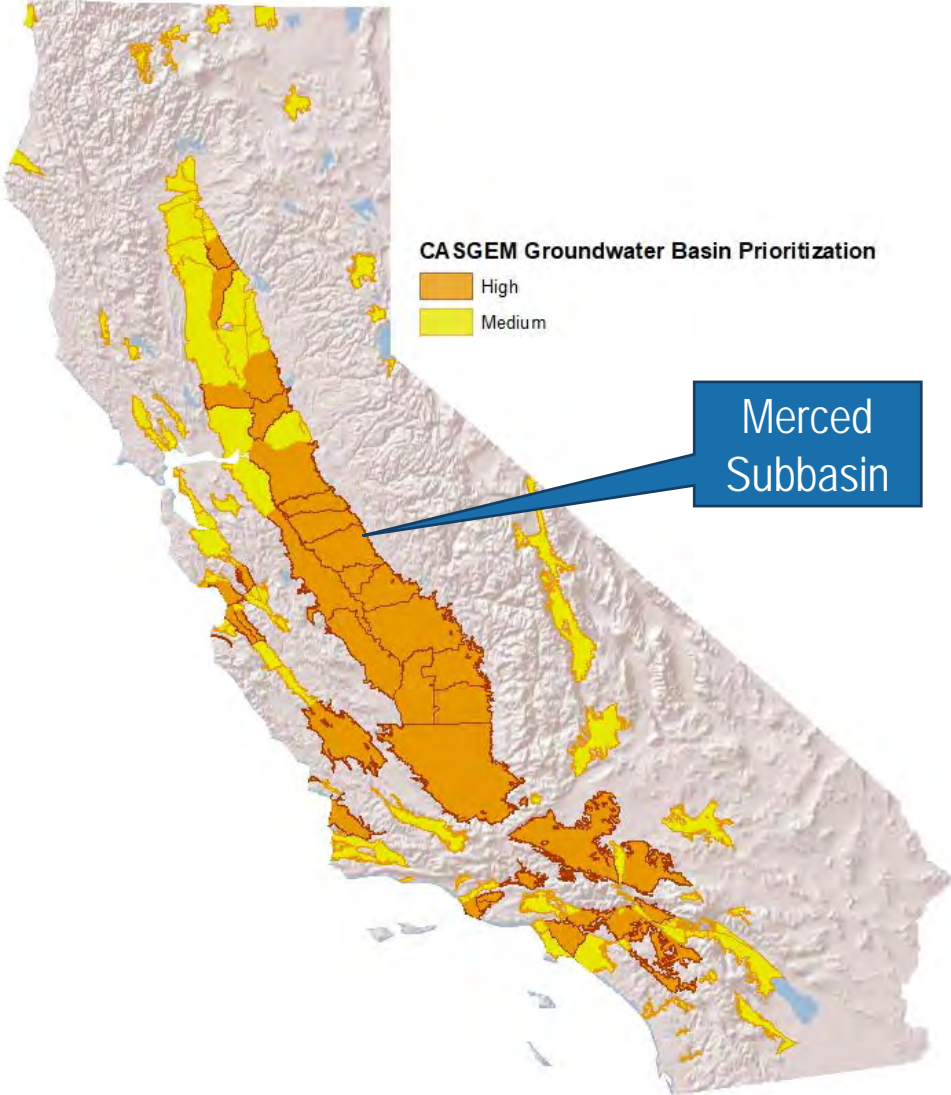
Image courtesy: Veronica Adrover/UC Merced

SGMA Fundamentals

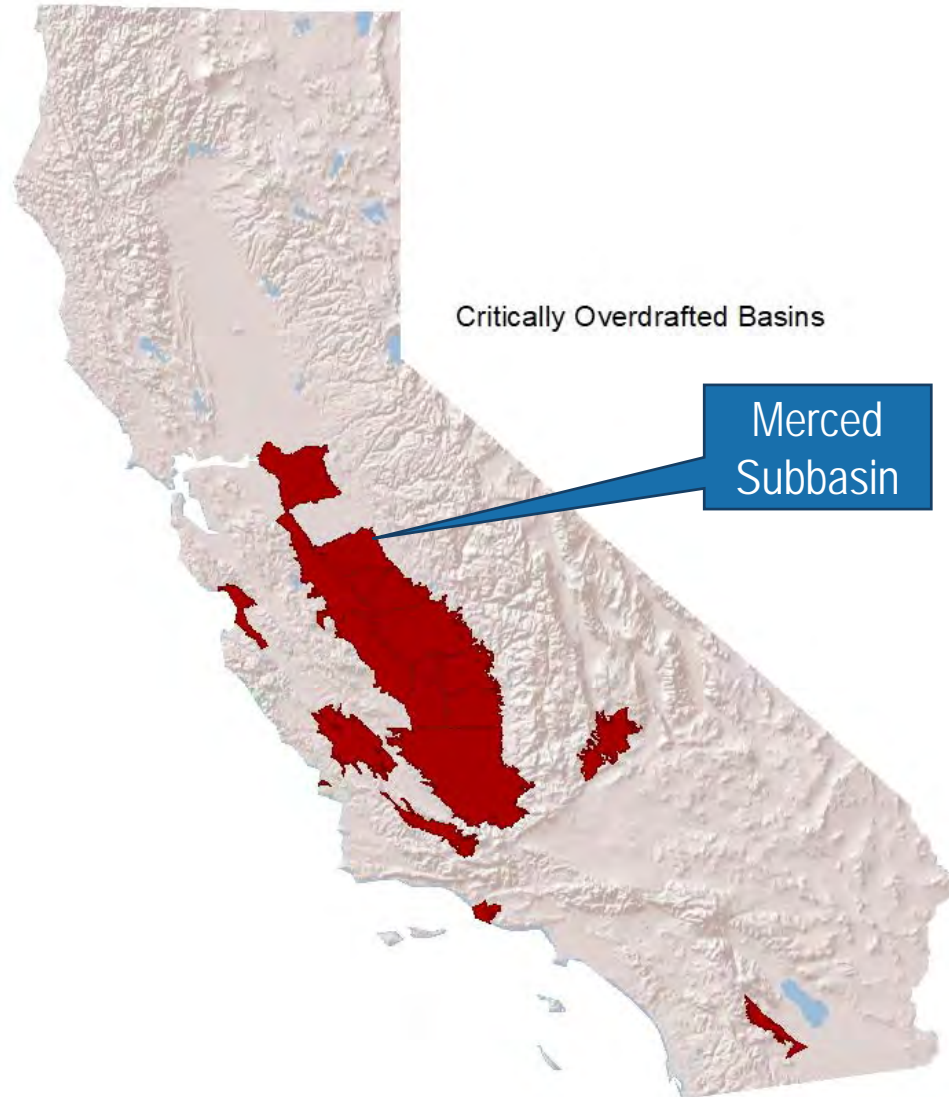
- Requires a Groundwater Sustainability Plan (GSP) be prepared and submitted by
 - **January 2020 for critically overdrafted basins,**
 - January 2022 for remaining high and medium priority basins.
- GSPs must include measurable objectives and milestones in increments of five years to **achieve sustainability within 20 years of GSP adoption.**
- Requires GSP development be open and transparent, with stakeholder and public input

Image courtesy: Veronica Adrover/UC Merced

California's High and Medium Priority Basins



Merced is one of the critically overdrafted basins



GSP Requirements

- Basin Setting
- Six Undesirable Results & Sustainability Goals
- Monitoring Network
- Measurable Objectives, Minimum Thresholds, and Interim Milestones
- Identify Projects and Management Actions
- Annual Groundwater Sustainability Plan (GSP) Reporting

Image courtesy: Veronica Adrover/UC Merced

SGMA Requires Addressing Six Undesirable Results



Chronic lowering of groundwater levels indicating a significant and unreasonable depletion of supply



Significant and unreasonable degraded water quality



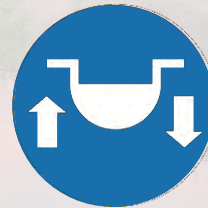
Significant and unreasonable reduction of groundwater storage



Significant and unreasonable land subsidence



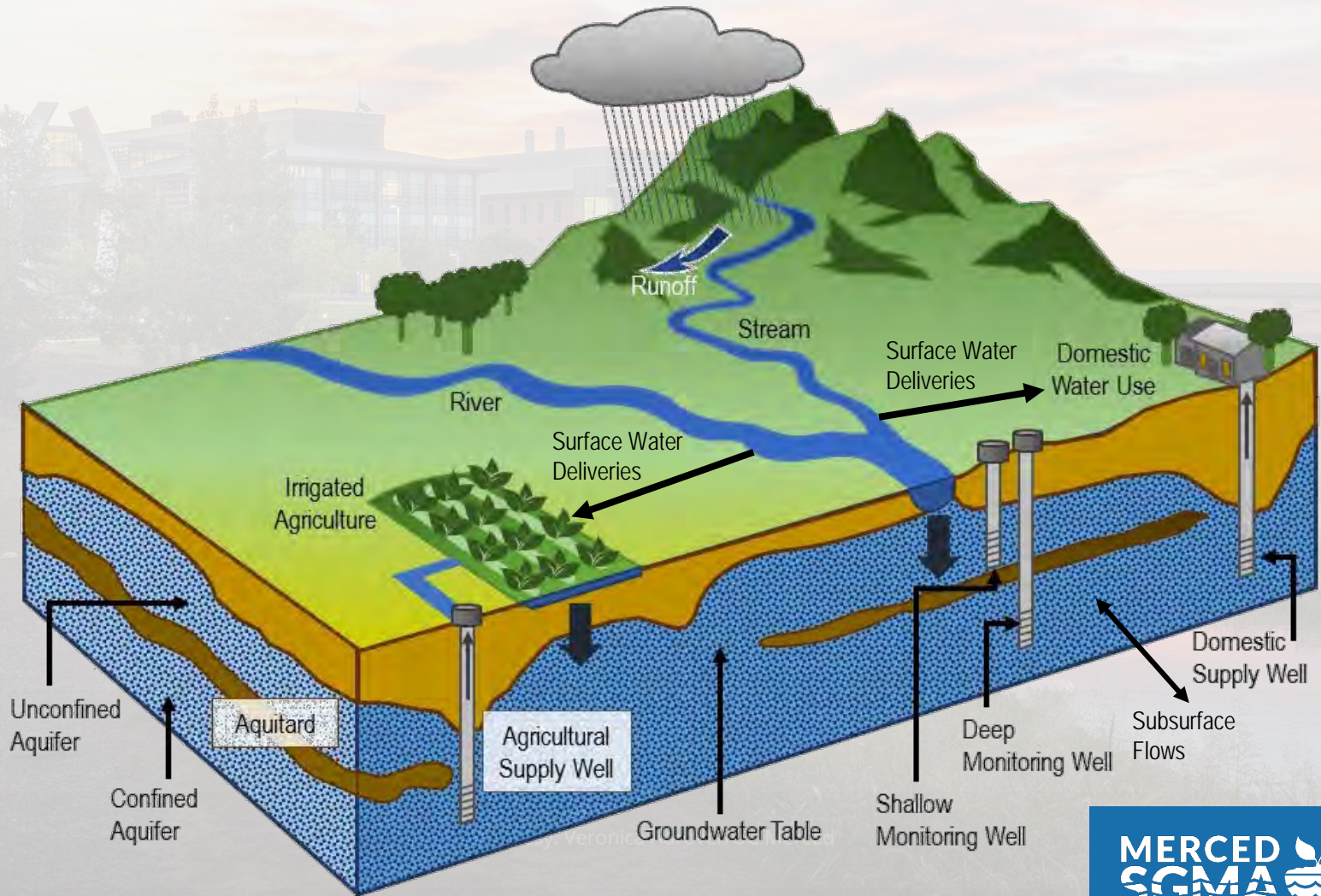
Significant and unreasonable seawater intrusion



Depletions of interconnected surface water that have significant and unreasonable adverse impacts on beneficial uses of the surface water

Image courtesy: Veronica Adrover/UC Merced

Basin Setting



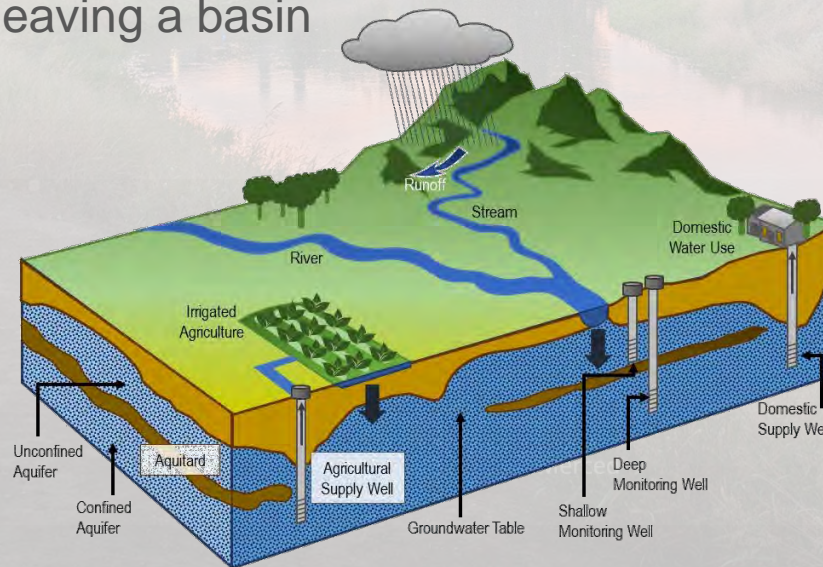
SGMA Requires Accounting of All Water Uses and Sources

■ Modeling Analysis:

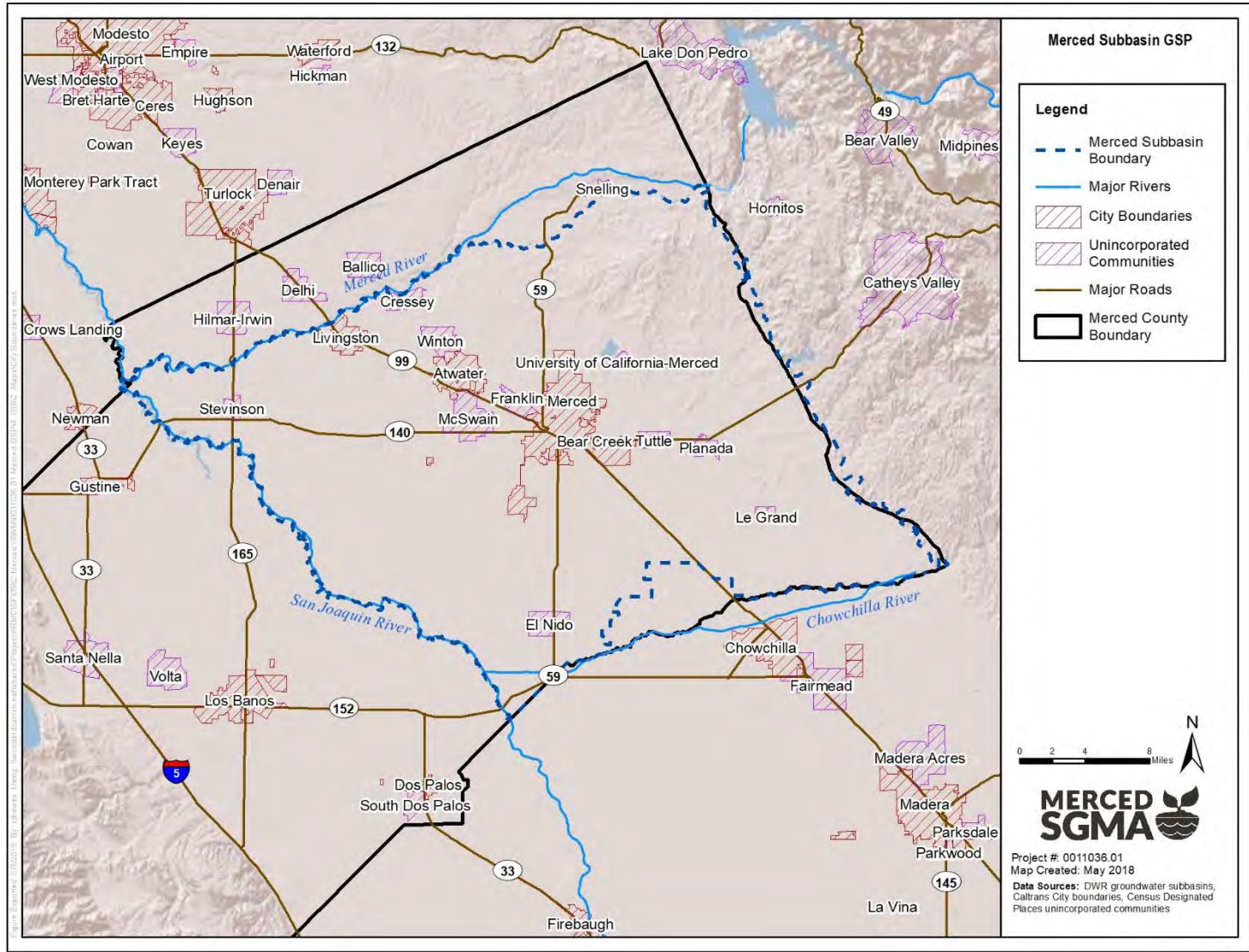
- Publicly available documentation
- Developed based on defensible data
- Equivalent defensible methods are acceptable

■ Water Budget:

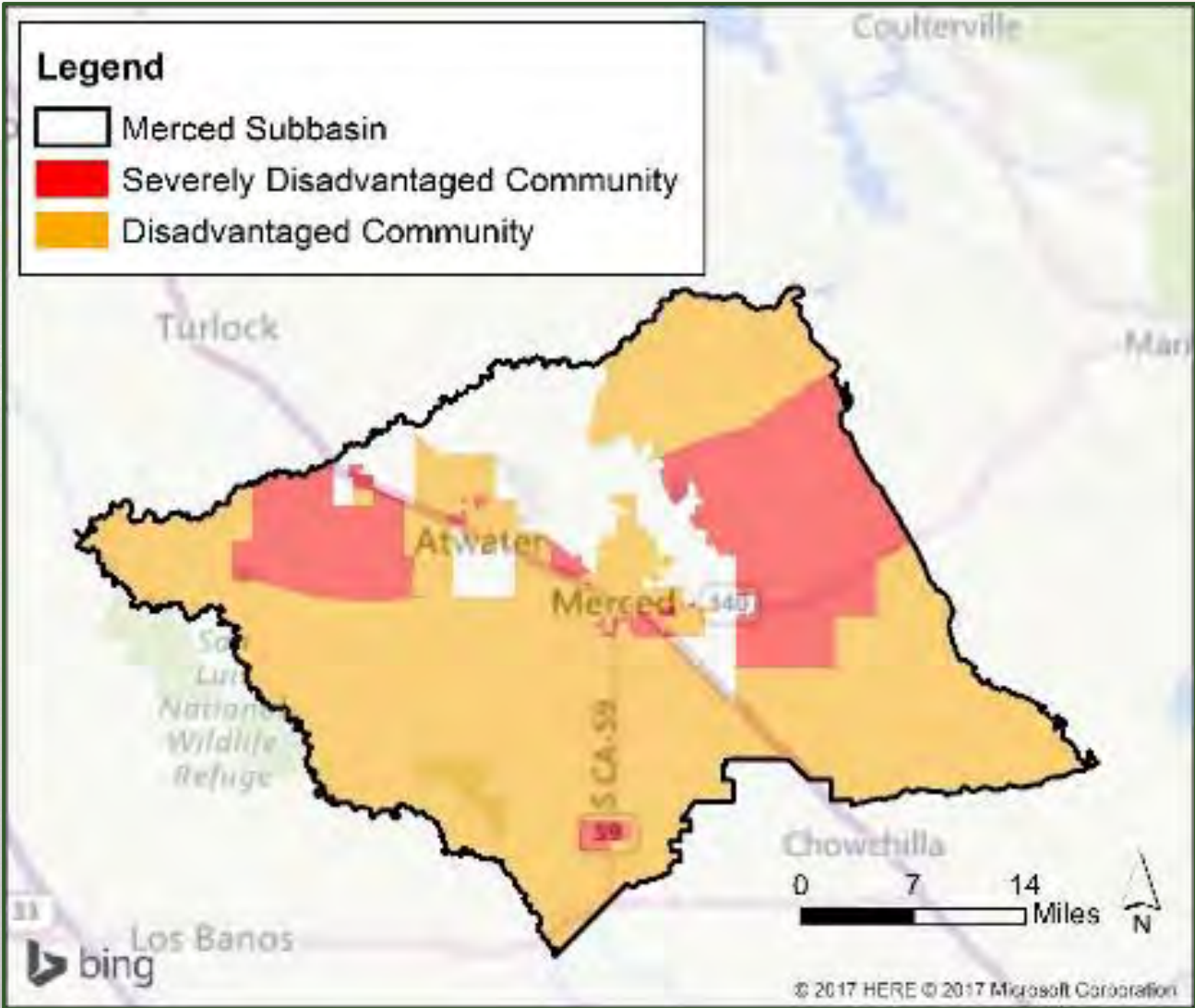
- Accounting of the total groundwater and surface water entering and leaving a basin



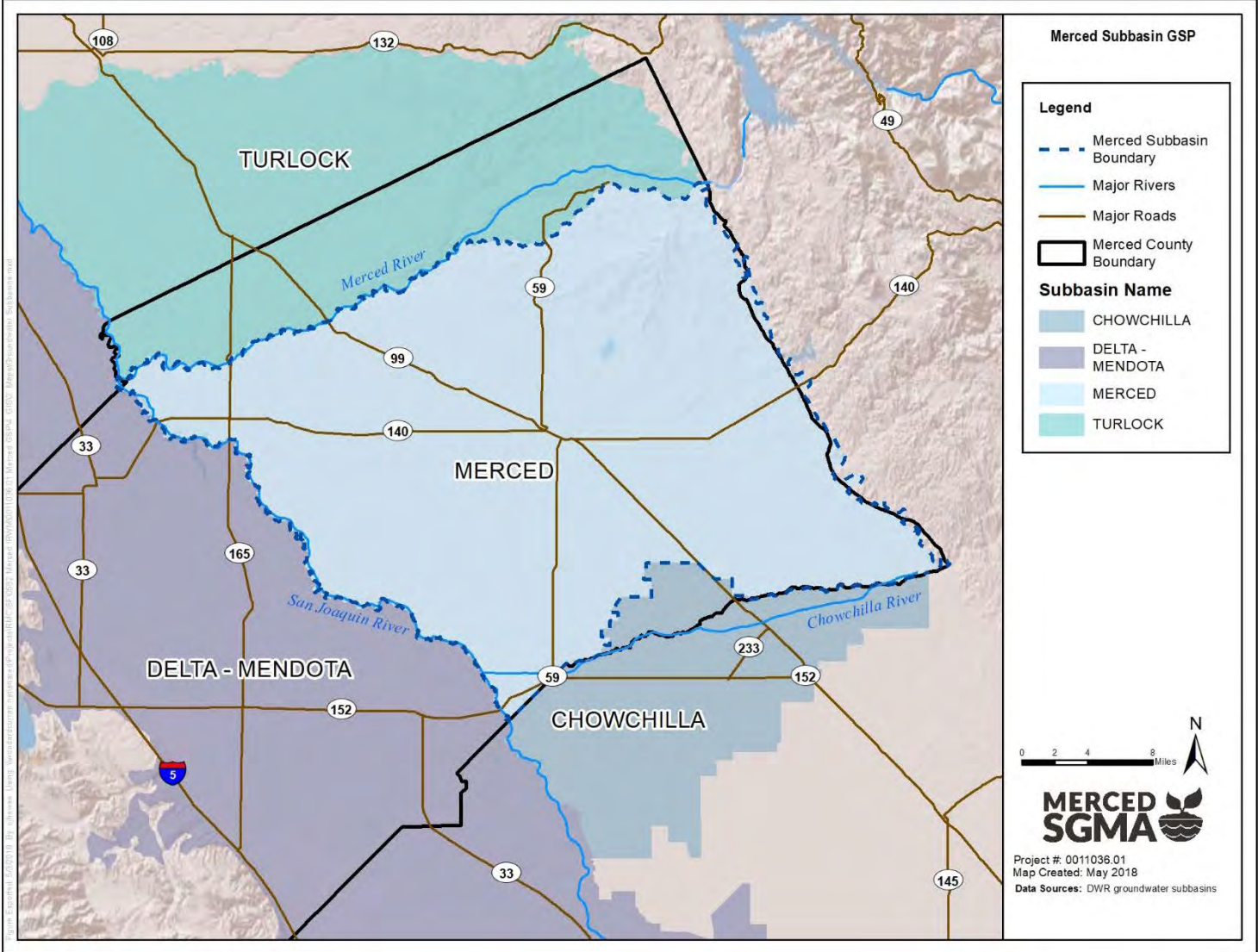
Merced Subbasin Boundaries



Subbasin Disadvantaged Communities



Subbasin Overview – Neighboring Basins



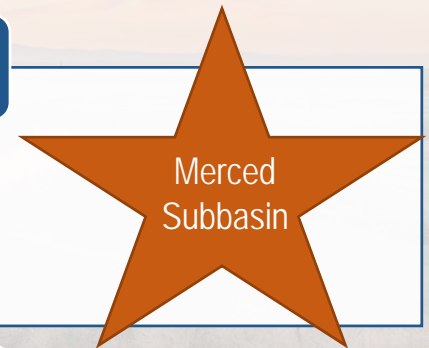
Basin Management Approach

1 Basin, 1 Plan, 1 GSA

- One GSA assumes responsibilities and authorities for the entire basin
- New or existing agency

1 Basin, 1 Plan, Multiple GSAs

- Several GSAs in same basin
- Requires significant coordination among GSAs
- Still evaluated based on basin-level implementation of GSP



1 Basin, Multiple Plans, Multiple GSAs

- Flexibility in terms of responsibilities and authorities
- Requires a single coordination agreement among all GSAs for the entire basin
- Still evaluated based on basin-level implementation of GSP (could get messy)

Image courtesy: Veronica Adrover/UC Merced

Merced Subbasin – 3 GSAs, 1 GSP

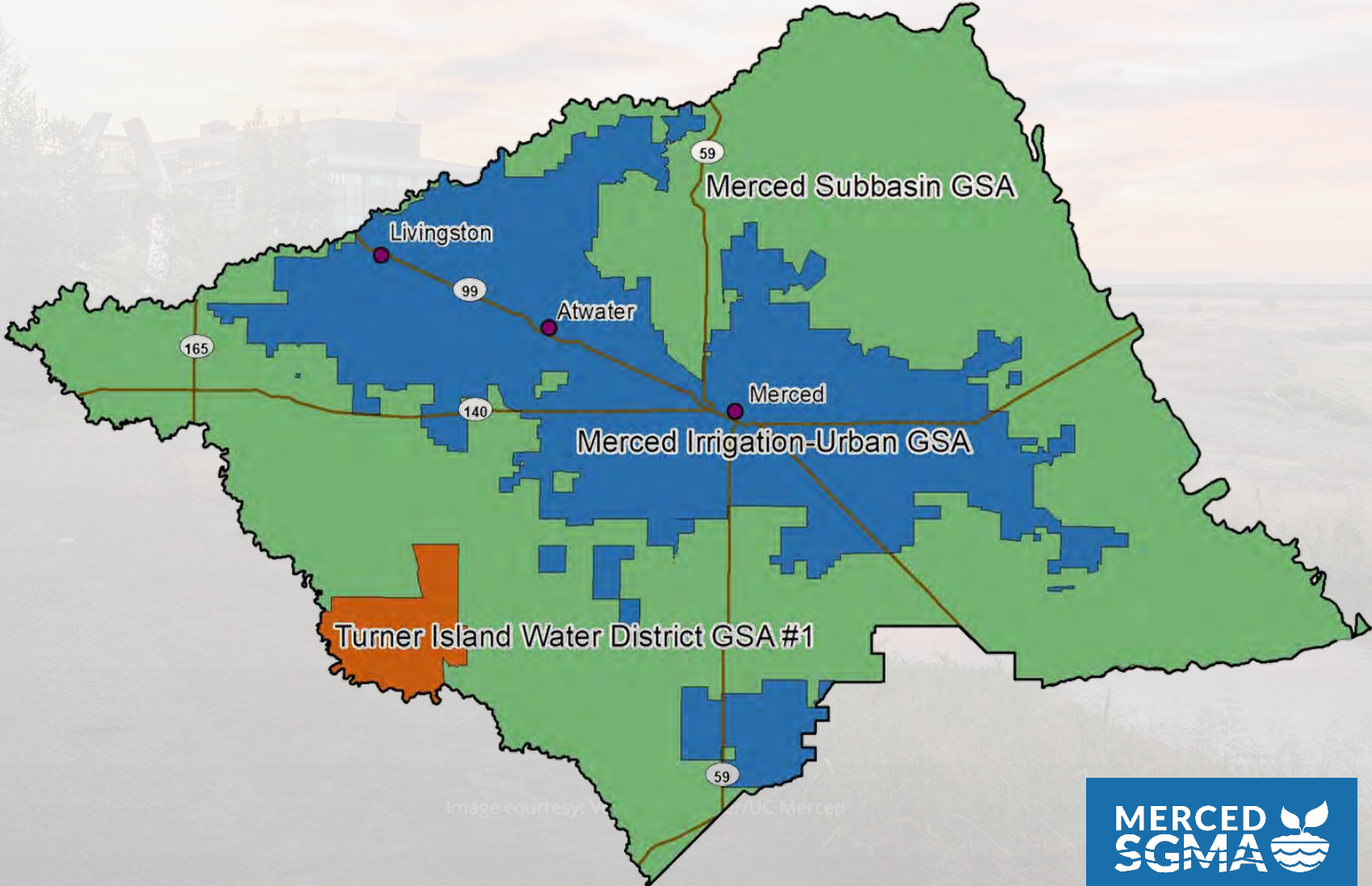


Image courtesy: UC Merced





Pre-SGMA Understanding of the Groundwater Basin

Image courtesy: Veronica Adrover/UC Merced

Understanding the Merced Groundwater Basin

Over last 5+ years, work has been completed under **SGMA Readiness and Stressed Basin grants**:

- Compile existing data and identify gaps
- Develop plan for monitoring networks of existing wells
- Update and calibrate the groundwater model
- Builds on the work of Merced Area Groundwater Pool Interests (MAGPI)
- Joint effort by Merced Irrigation District, County of Merced, and City of Merced
- Received nearly \$500,000 in funding from DWR

Image courtesy: Veronica Adrover/UC Merced

Data Compilation and Gap Analysis

Groundwater Data Collection and Monitoring Plan Development

- Compiled existing data
- Data gap analysis

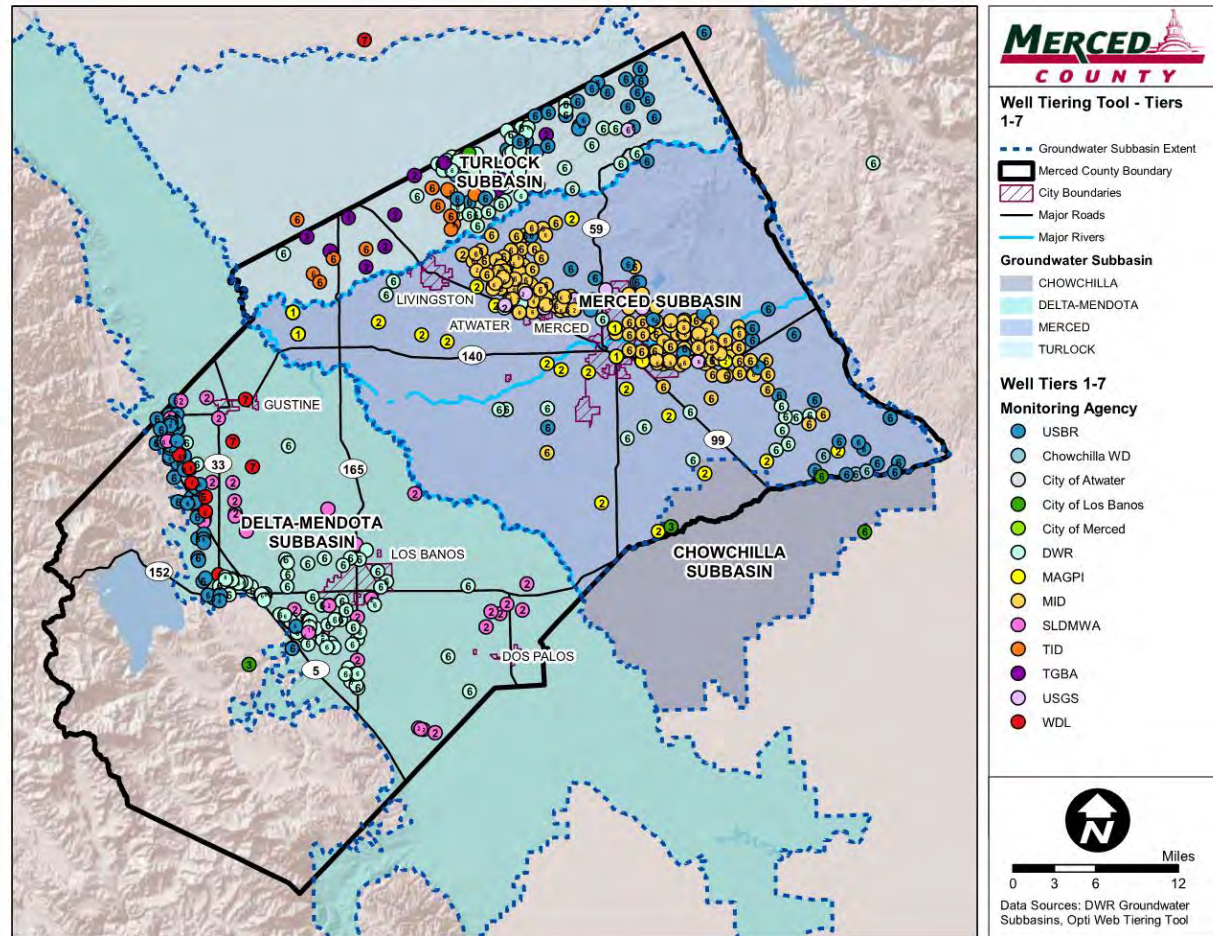


Image courtesy: Veronica Adriano/UC Merced

Monitoring Plan Development

Groundwater Data Collection and Monitoring Plan Development

- Compiled existing data
- Data gap analysis
- Analysis for locating additional monitoring wells

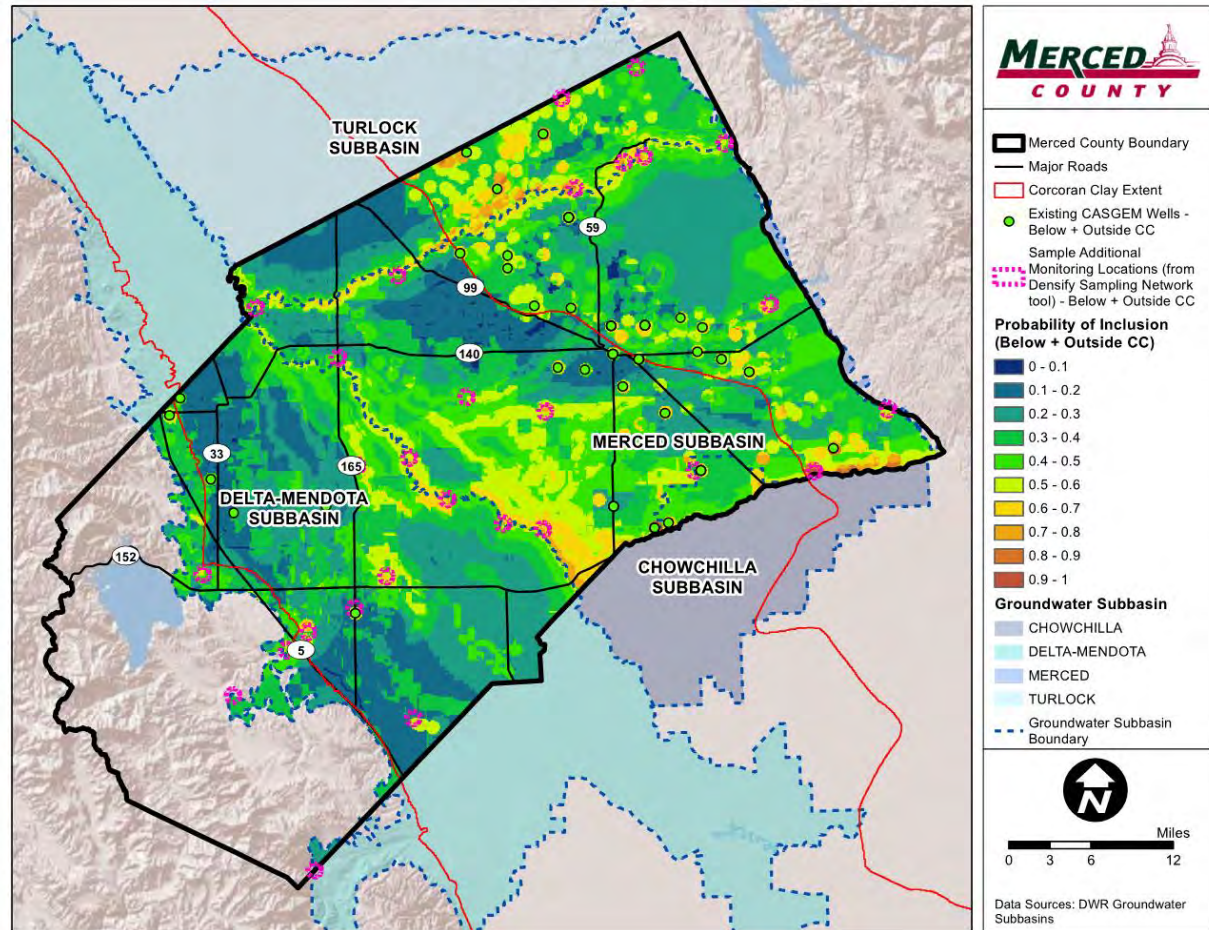


Image courtesy: Veronica Adrover/UC Merced

Groundwater Model Update and Calibration

- Developed 2015-2017; calibrated recently
- Foundational tool to evaluate basin conditions

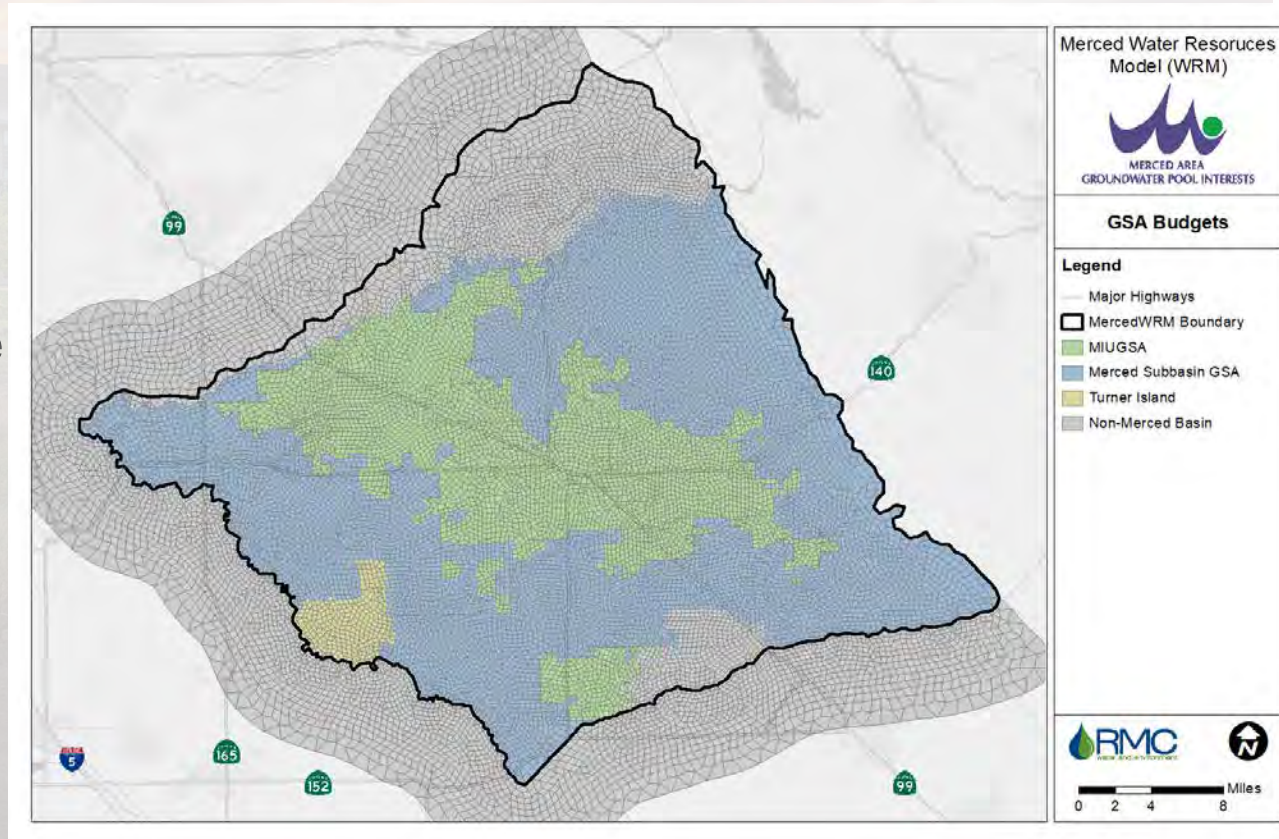


Image courtesy: Veronica Adrover/UC Merced

Learnings and Next Steps

- Gap areas that need monitoring:
 - Southern “triangle” piece of Subbasin (along Delta-Mendota Subbasin boundary)
 - Le Grand Community Services District area (near Chowchilla Subbasin boundary)
- Characterize basin conditions
- Review model with water managers and other stakeholders

Image courtesy: Veronica Adrover/UC Merced



SGMA Grants, Scope, and Timeline

Image courtesy: Veronica Adrover/UC Merced

SGMA Grant Funding

- Application for Groundwater Sustainability Plan (GSP) funding
 - Requested \$1.5M (total project cost of \$1.73M)
 - Requested 100% cost share waiver since basin includes more than 50% DACs
- Application for 3 Projects Benefitting Severely Disadvantaged Communities (SDACs)
- DWR recommended full funding; awarding/contracting in progress

Image courtesy: Veronica Adrover/UC Merced

Severely Disadvantaged Community (SDAC) Projects

Three Projects

1. Planada Groundwater Recharge Basin Pilot Project (\$400k)
2. El Nido Groundwater Monitoring Wells (\$400k)
3. Meadowbrook Intertie Feasibility Study (\$100k)

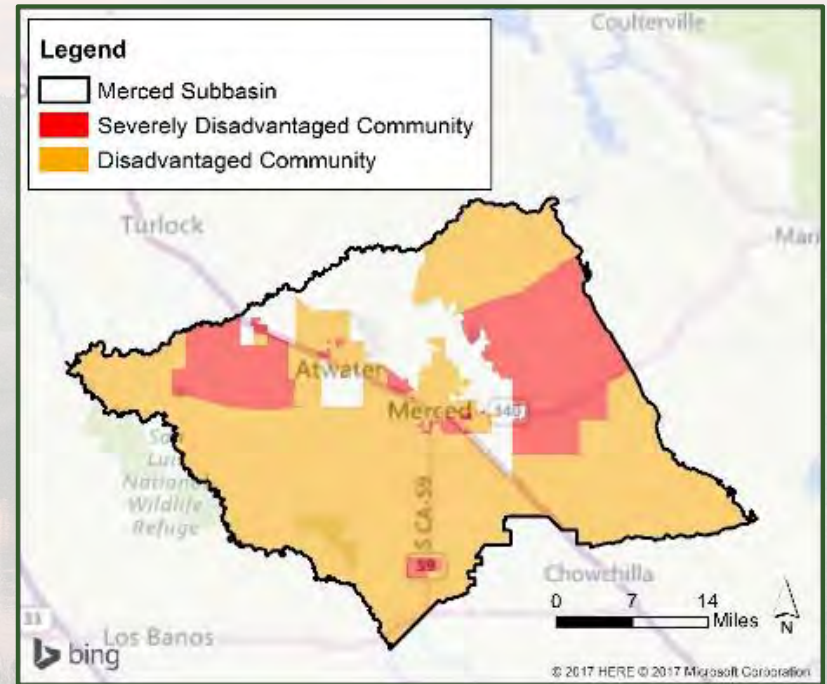


Image courtesy: Veronica Adrover/UC Merced

GSP Progress to Date

GSP Initiation

- Developed Roadmap and revised schedule
- Launched website Dec 2017
- Filed notice to prepare GSP with DWR in Jan 2018
- Initial technical work compiling basin setting information

GSP Coordination

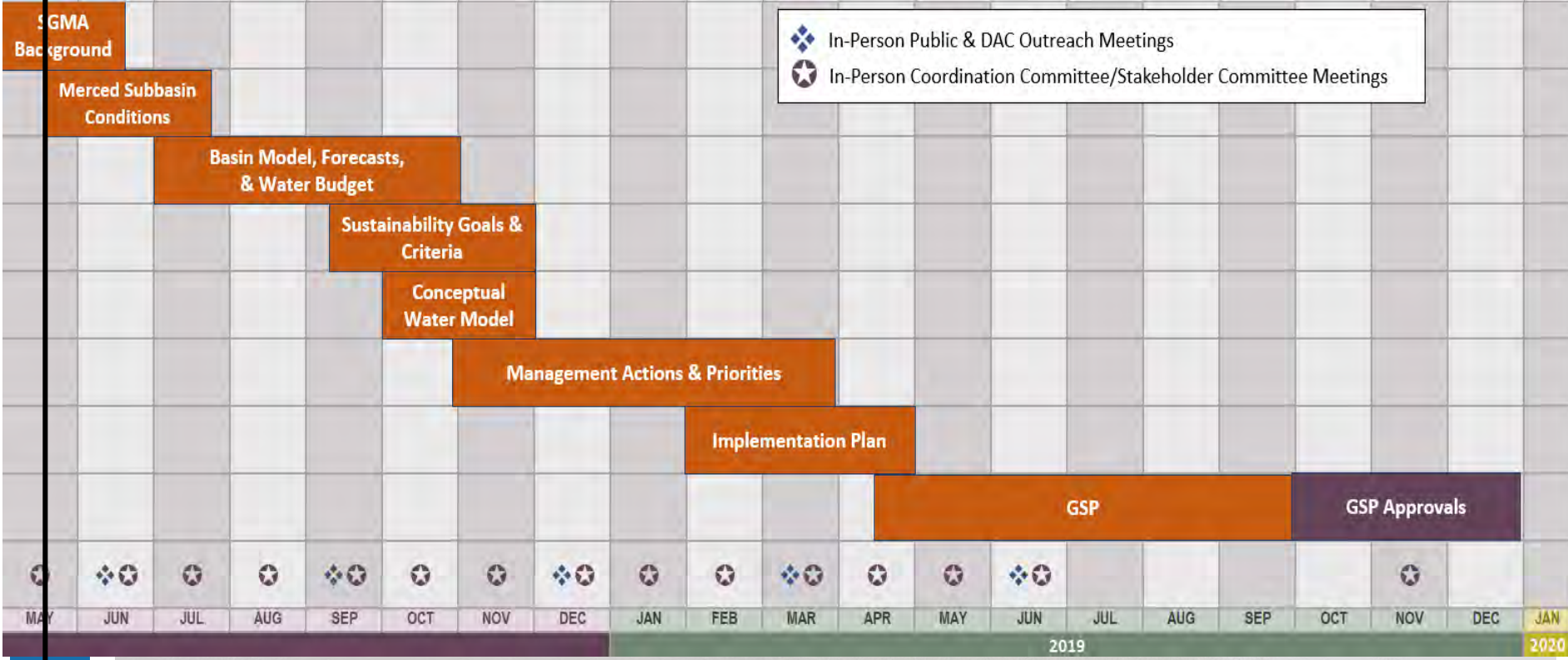
- Joint GSAs meeting in January
- Monthly CC meetings began in March 2018
- Weekly staff calls
- DWR Technical Support Services
- Ongoing coordination with neighboring basins

Stakeholder Outreach

- Finalizing Outreach Plan
- Established Stakeholder Committee, monthly meetings begin in May 2018

Image courtesy: Veronica Adrover/UC Merced

GSP Process and Timeline: the "Roadmap"



 *We Are Here*

Image courtesy: Veronica Adrover/UC Merced





Stakeholder Committee Input and Schedule

Image courtesy: Veronica Adrover/UC Merced

Schedule for Stakeholder Committee Meetings

- Currently planning monthly meetings
 - Fourth Monday of the month
- Same day as Coordinating Committee meetings
- Stakeholder meetings held in morning; reporting to Coordinating Committee in afternoon

Image courtesy: Veronica Adrover/UC Merced

Stakeholder Committee Decision-making

- Stakeholder Committee to provide review and comment to the planning team, Coordinating Committee and the GSA governing boards
- There may be times that the Stakeholder Committee wants to develop joint or consensus comments regarding the GSP
- Consensus is not required or expected. However, it can indicate more importance/weight to a recommendation
- The following is an approach for assessing and developing consensus

Image courtesy: Veronica Adrover/UC Merced

Consensus Recommendations

- Polling the committee to assess and confirm consensus
 1. I can say an unqualified 'yes' to the decision. I am satisfied that the decision is an expression of the wisdom of the group.
 2. I find the decision perfectly acceptable. It is the best of the real options we have available to us.
 3. I can live with the decision. However, I'm not especially enthusiastic about it.
 4. I do not fully agree with the decision and need to register my view about it. However, I do not choose to block the decision and will stand aside. I am willing to support the decision because I trust the wisdom of the group.
 5. I do not agree with the decision and feel the need to block the decision being accepted as consensus.
 6. I feel that we have no clear sense of unity in the group. We need to do more work before consensus can be achieved.

Image courtesy: Veronica Adrover/UC Merced



Questions/Comments from Public

Image courtesy: Veronica Adrover/UC Merced



Next Steps

Image courtesy: Veronica Adrover/UC Merced

What's coming up next?

- Next Stakeholder Committee meeting – June 25th
 - Plan Area and Authority
 - Current Basin Conditions
 - Overview of existing Groundwater Model
 - Procedures for consensus
- July 23 Stakeholder Committee meeting
- Planning activities underway
 - Initial sections of GSP under development
 - Plan Area and Authority
 - Using model to develop historical and future water budget estimates
 - Meeting with DWR about Technical Support Services

Image courtesy: Veronica Adrover/UC Merced

GSP Stakeholder Committee

Coordinating Committee Meeting – May 29, 2018

Image courtesy: Veronica Adrover/UC Merced

