

---

# GSP Coordinating Committee

---

Coordinating Committee Meeting – May 29, 2018

Merced Irrigation-Urban GSA  
Merced Subbasin GSA  
Turner Island Water District GSA-1

Image courtesy: Veronica Adrover/UC Merced





---

# Agenda

---

1. Call to Order
2. Approval of Minutes for April 23, 2018
3. Stakeholder Committee Update
  - a) Update from 5/29 stakeholder meeting
  - b) Action – Add City of Livingston representative
4. Presentation by Woodard & Curran on GSP Development
  - a) Update of Stakeholder Outreach Plan
  - b) Overview of basin modeling efforts to date and historical water budget
  - c) Discussion of Undesirable Results and Minimum Thresholds

Image courtesy: Veronica Adrover/UC Merced

---

# Agenda Continued

---

4. Update on DWR's SGMA Technical Support Services
5. Discuss Leadership Counsel Request for Letter of Support
  - a) Action – authorize letter of support
6. Public comment
7. Next steps and adjourn

Image courtesy: Veronica Adrover/UC Merced






---

# Stakeholder Committee Update

---

Image courtesy: Veronica Adrover/UC Merced





---

# Basin Modeling and Water Budget – Work to Date

---

Image courtesy: Veronica Adrover/UC Merced



---

# See Separate GSP Modeling Presentation

---



Image courtesy: Veronica Adrover/UC Merced





---

# Undesirable Results and Minimum Thresholds

---

Image courtesy: Veronica Adrover/UC Merced



---

# Undesirable Results

---

- “Significant and Unreasonable” negative impacts that can occur for each Sustainability Indicator
- Conditions that we do not want to occur
- Used to guide and justify GSP components
  - Monitoring Network
  - Minimum Threshold
  - Projects and Management Actions

Image courtesy: Veronica Adrover/UC Merced



---

# Minimum Thresholds

---

- Point at which Undesirable Results may begin to occur
  - Example: Lowest GW elevations can go at a monitoring point without something significant and unreasonable happening to groundwater
  - If issues are already occurring, we only need to “go back” to Jan 1, 2015 conditions; if no issues are occurring, can set threshold where they would be anticipated to occur
- Quantitative thresholds

Image courtesy: Veronica Adrover/UC Merced



---

# Minimum Thresholds – Going Back to 2015

---

- If issues are occurring now, need to set minimum thresholds at Jan 1, 2015 levels (or better)
- If issues are NOT occurring now, need to set minimum thresholds where issues are anticipated to occur (or better)
  - If issues are NOT occurring now, when might they have occurred in the past?
  - Look back to 1987-1992 drought conditions to determine whether issues occurred there
  - Supposition: if issues did not occur in 1992, that may be a reasonable threshold
- **Assignment: review conditions in 1992, 2015, and present to understand when there were issues, and what those were**

Image courtesy: Veronica Adrover/UC Merced



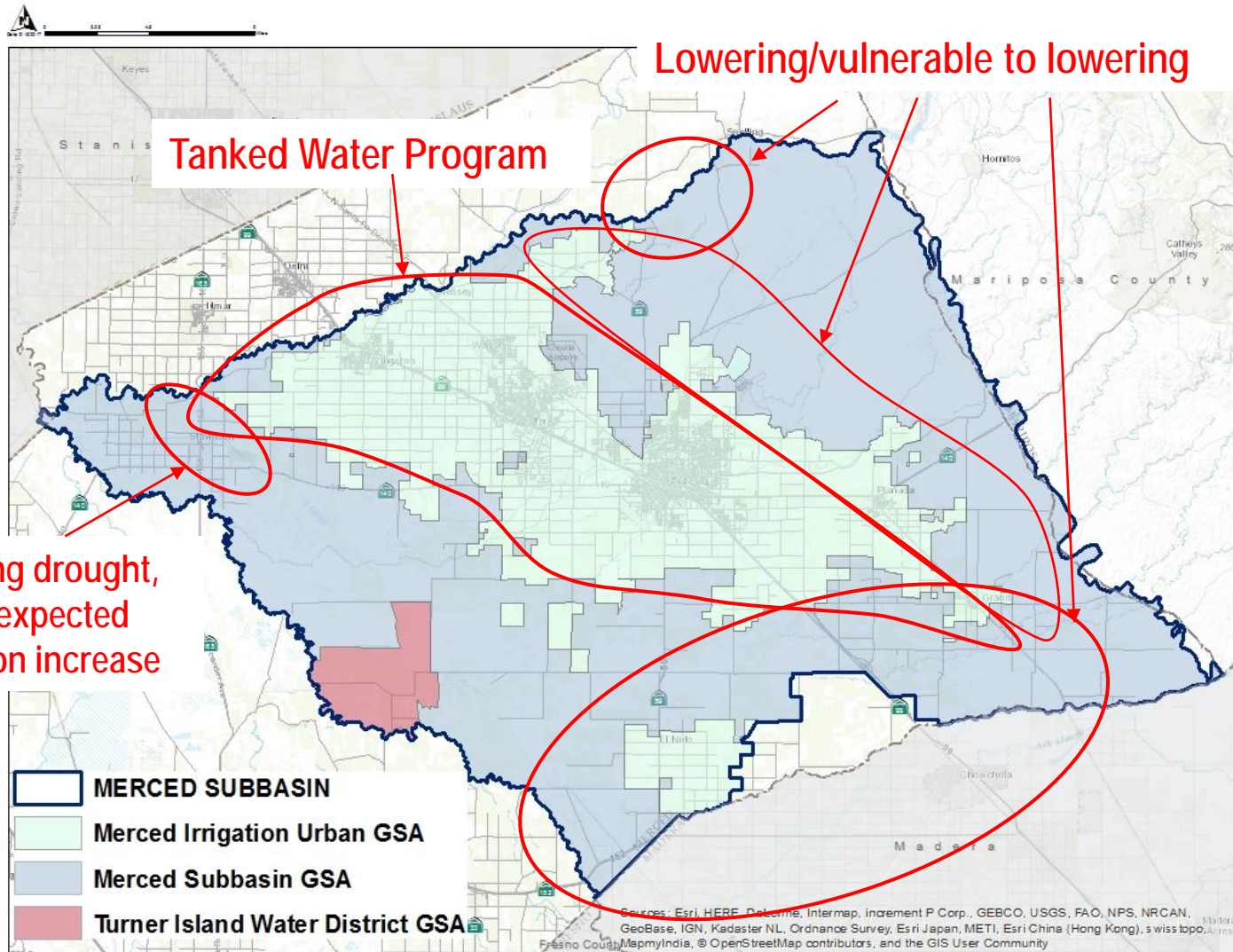
# CC Feedback on Undesirable Results

- At the April 23, 2018 meeting CC members were asked to provide input on their knowledge of existing or previous undesirable results in the basin.
- Six SGMA Undesirable Results
  - 1. Chronic Lowering of Groundwater
  - 2. Reduction in Groundwater Storage
  - 3. Seawater Intrusion (N/A)
  - 4. Degraded Water Quality
  - 5. Land Subsidence
  - 6. Depletion of Interconnected Surface Water
- Received input from CC members from all 3 GSAs and consolidated

Image courtesy: Veronica Adrover/UC Merced



# 1. CC Reported Groundwater Level Concerns





---

# 1. CC Reported Groundwater Level Concerns

---

- Lowering frequently observed near the North Eastern, South Eastern, South Central and along the Eastern Edge of the corcoran clay, and near Planada and Le Grand.
- Shallow wells have gone dry in central part of Subbasin in 2015 (including Livingston, Winton, Atwater, Merced, Planada, and Le Grand). Areas of continued concern: northern, south/western, and central parts of Subbasin.
- Some areas in Stevinson Water District experienced lowering (away from East Side Canal). Recovered post-drought. Recharge planned for areas expecting significant future groundwater extraction. Lowering most extreme in north/eastern areas from cropping dependence on groundwater.
- George Park has seen recent lowering issues in 2015 and 2018.
- Turner Island Water District: not an issue in 2015 and 2018.
- Historical issues: Drought Emergency Tanked Water Program in 2015

Image courtesy: Veronica Adrover/UC Merced



## 2. CC Reported Groundwater Storage Concerns

- Some uncertainty in degree to which this is a concern for the basin
- Reported in some areas as not a concern

Image courtesy: Veronica Adrover/UC Merced



---

# 3. CC Reported Seawater Intrusion Concerns

---

- Not applicable to this subbasin.

Image courtesy: Veronica Adrover/UC Merced



---

## 4. CC Reported Water Quality Concerns

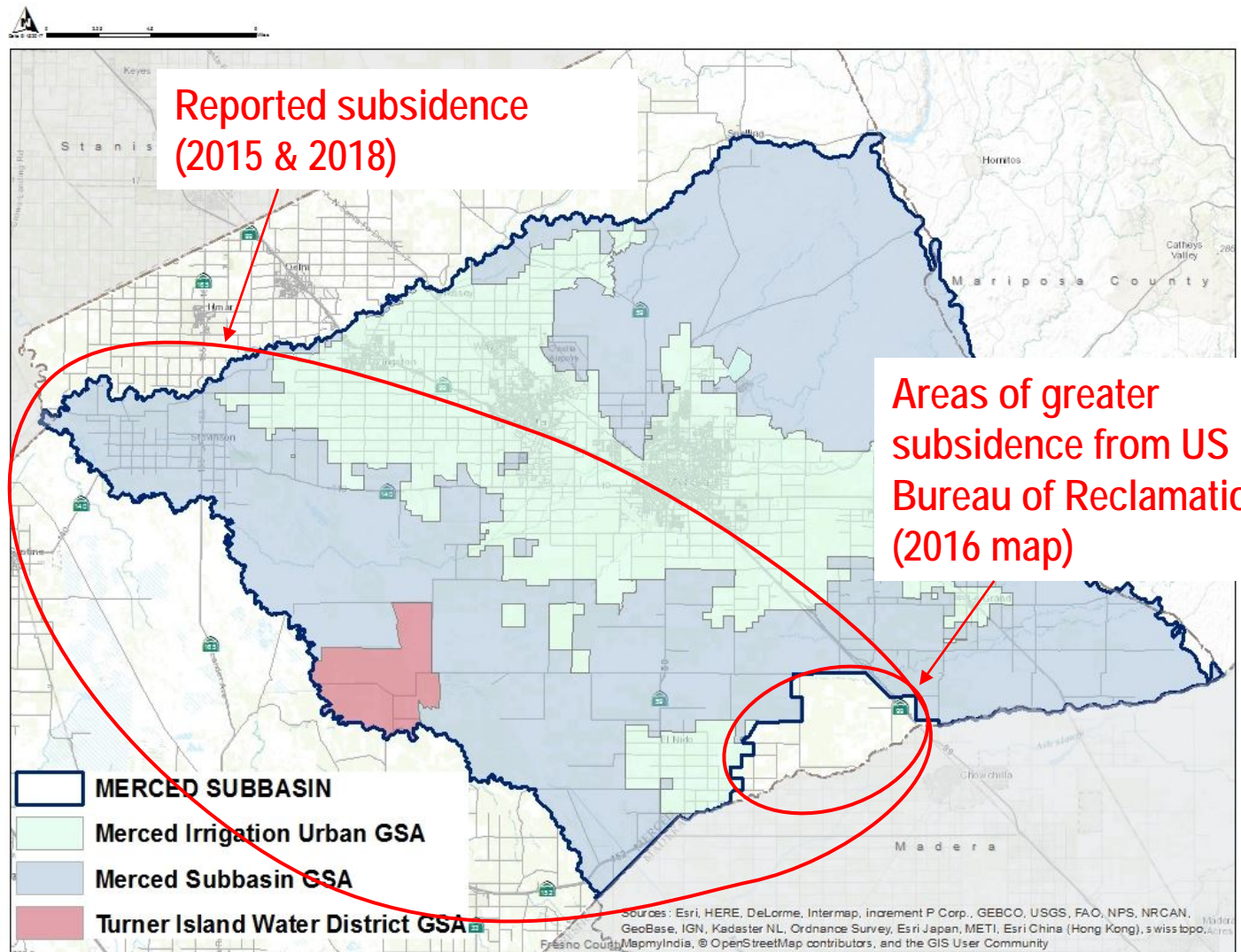
---

- Drinking water quality concerns in many communities in Merced County (list provided by County).
- Some saline intrusion from land adjacent to the San Joaquin River affecting southern and western Subbasin areas.
- In the northwest corner of the Subbasin, salinity reported as historically and currently an issue; mainly associated with fertilizer use.
- More monitoring needed to better understand groundwater quality in basin.

Image courtesy: Veronica Adrover/UC Merced

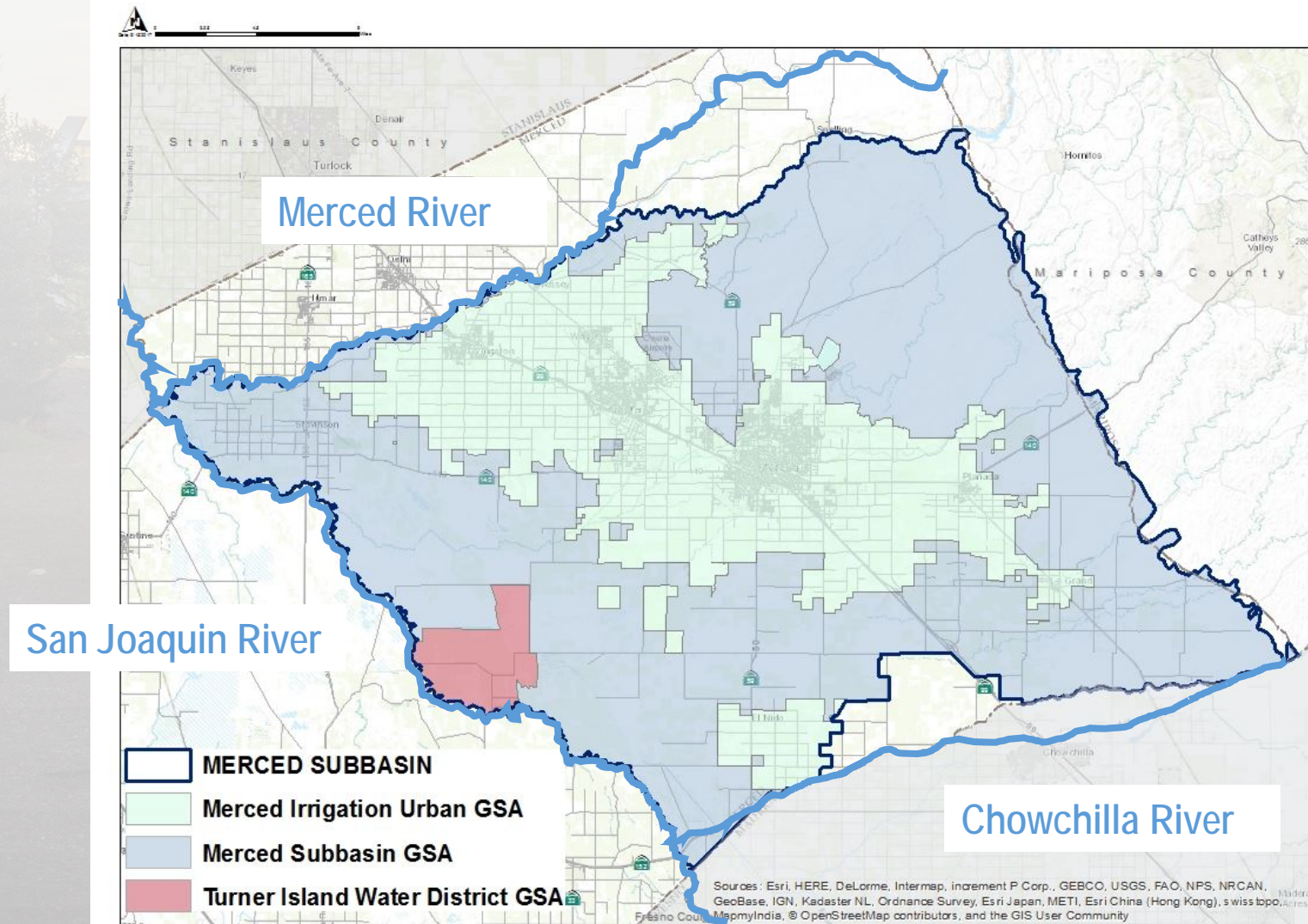


# 5. CC Reported Land Subsidence Concerns





# 6. CC Reported Interconnected Surface Water Concerns



## 6. CC Reported Interconnected Surface Water Concerns

- Some uncertainty in degree to which this is a concern for the basin
- Some SW/GW connectivity near river systems
- Further information needed to determine whether this is a significant issue

Image courtesy: Veronica Adrover/UC Merced



---

# Undesirable Results

---

- “Significant and Unreasonable” negative impacts that can occur for each Sustainability Indicator
- Conditions that we do not want to occur
- Used to guide and justify GSP components
  - Monitoring Network
  - Minimum Threshold
  - Projects and Management Actions

Image courtesy: Veronica Adrover/UC Merced

# Setting Minimum Thresholds: What do we want to strive for as a basin?

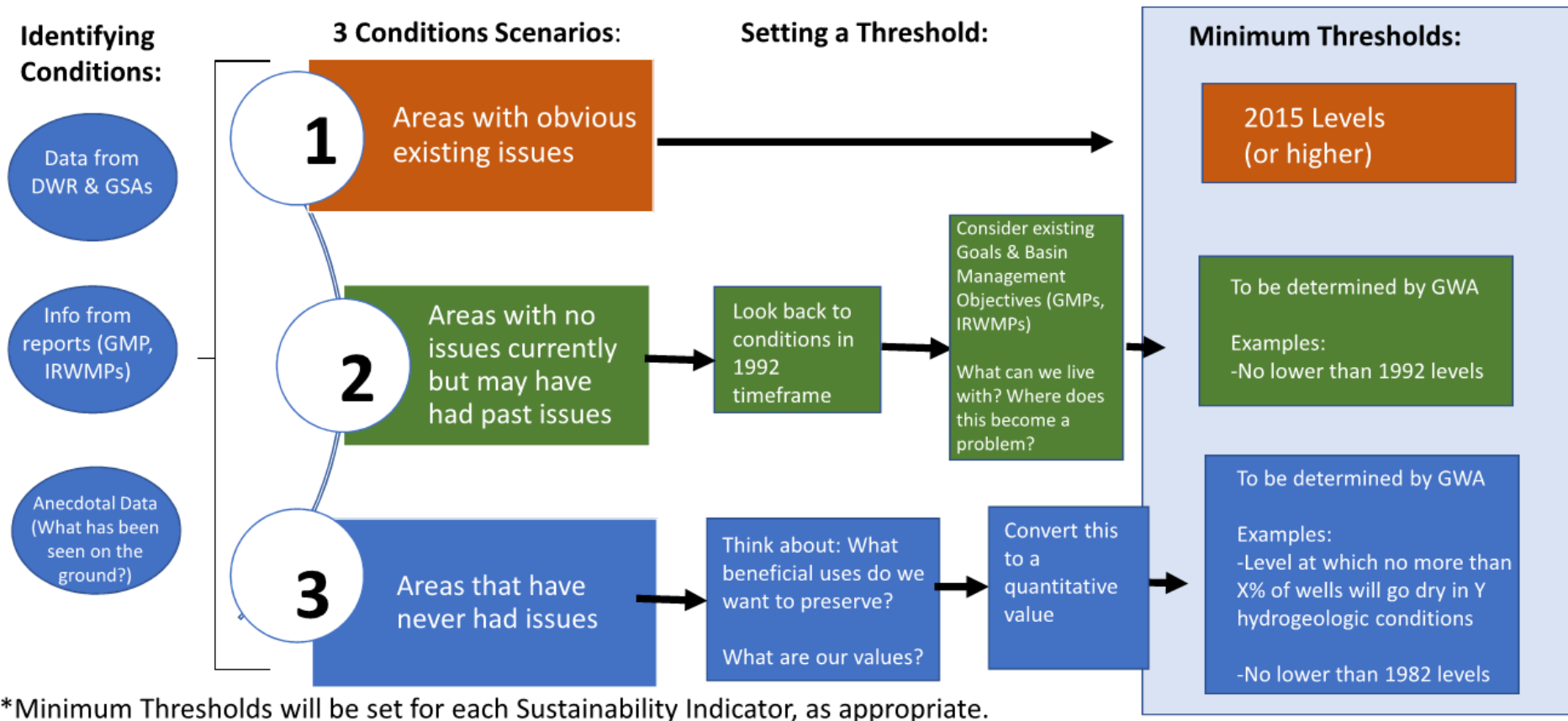


Image courtesy: Veronica Adrover/UC Merced





---

# DWR Technical Support Services Update

---

Image courtesy: Veronica Adrover/UC Merced





---

# Leadership Counsel Request for Letter of Support

---

Image courtesy: Veronica Adrover/UC Merced





---

# Questions/Comments from Public

---

Image courtesy: Veronica Adrover/UC Merced





---

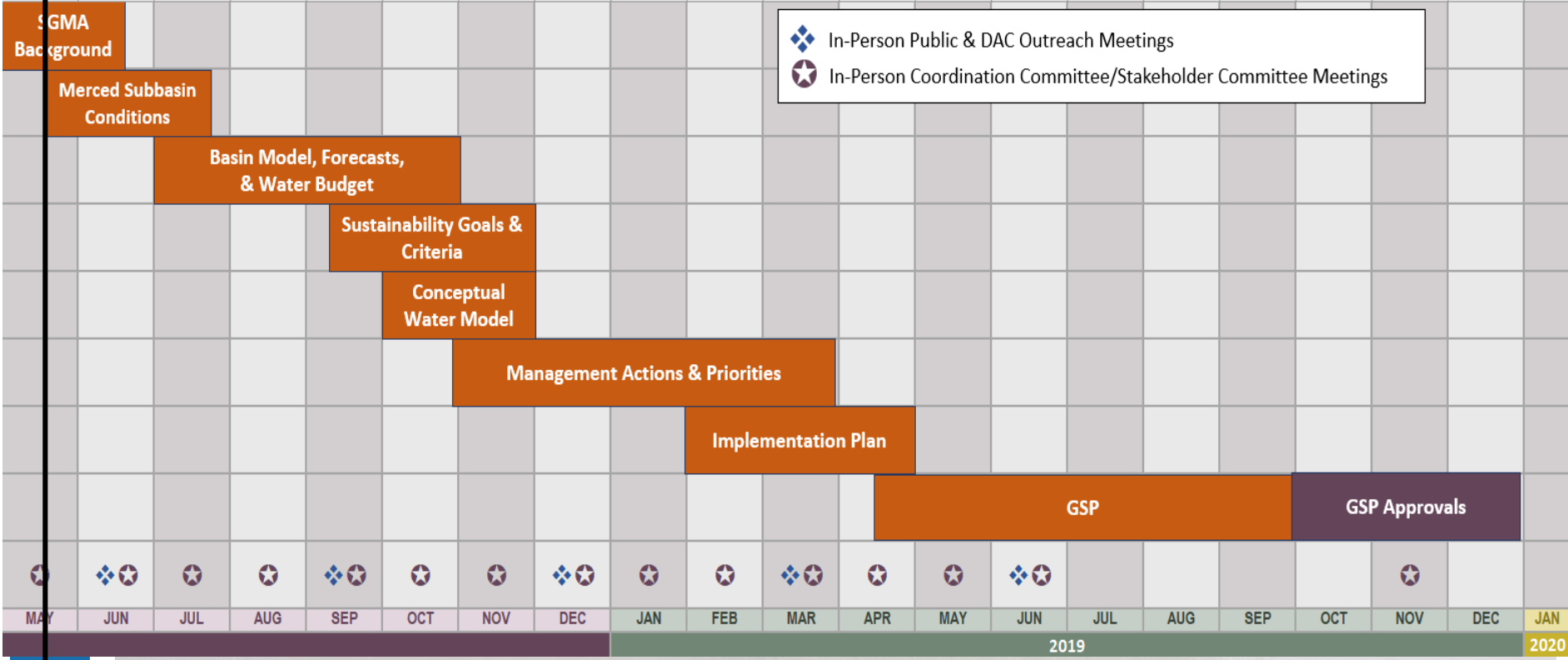
# Next Steps

---

Image courtesy: Veronica Adrover/UC Merced



# GSP Process and Timeline: the "Roadmap"



 *We Are Here*

Image courtesy: Veronica Adrover/UC Merced



---

# Next Steps

---

- Upcoming review of Plan Area and Basin Conditions in June
- Adjourn to next meeting (Monday, June 25, 2018 @ 1:30 PM, location TBD)
- Focus for June meeting : projected water budget and measurable objectives

Image courtesy: Veronica Adrover/UC Merced



---

# GSP Coordinating Committee

---

Coordinating Committee Meeting – April 23, 2018

Merced Irrigation-Urban GSA  
Merced Subbasin GSA  
Turner Island Water District GSA-1

Image courtesy: Veronica Adrover/UC Merced

